

D17

Figure 1

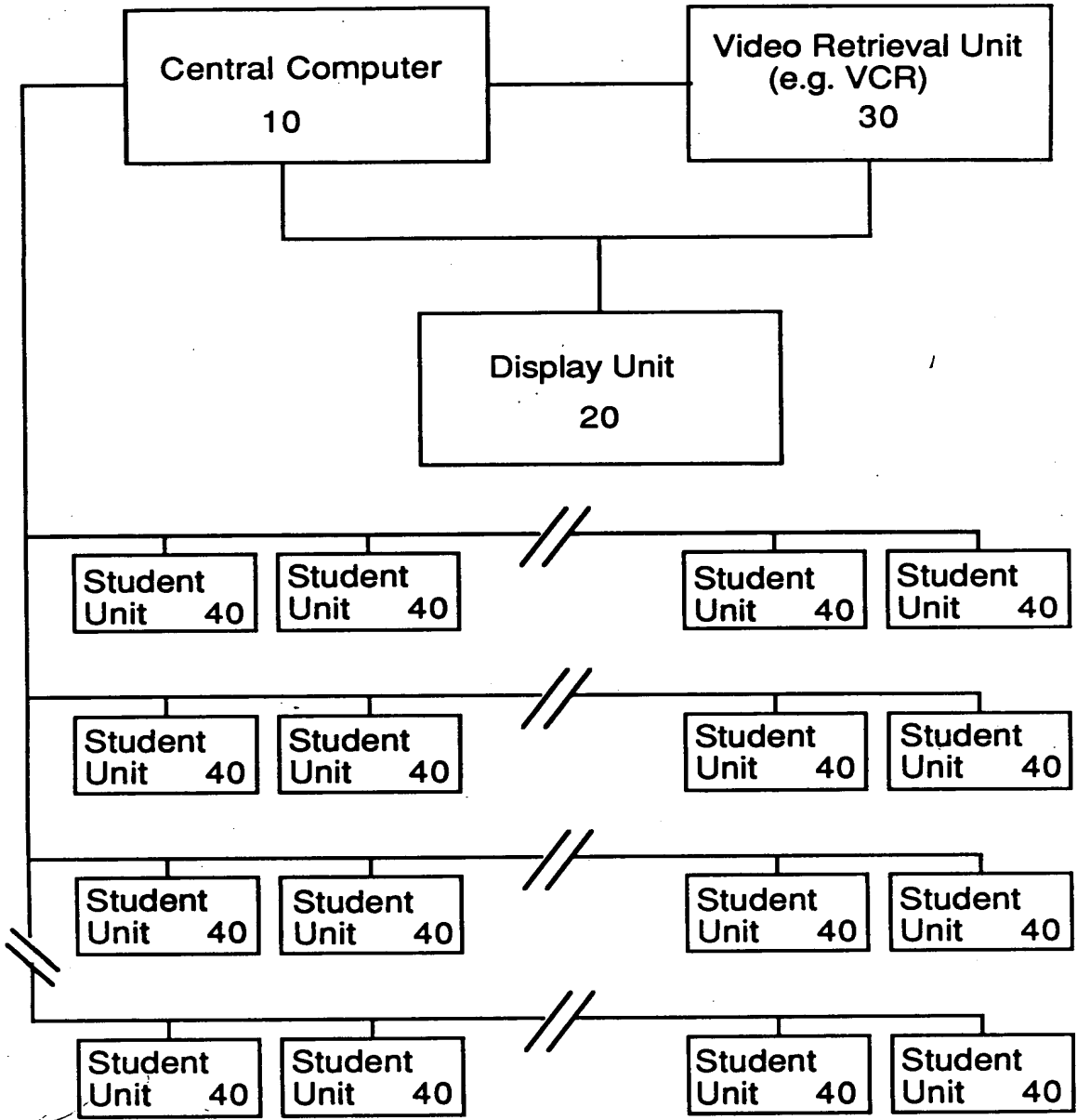


Figure 2A

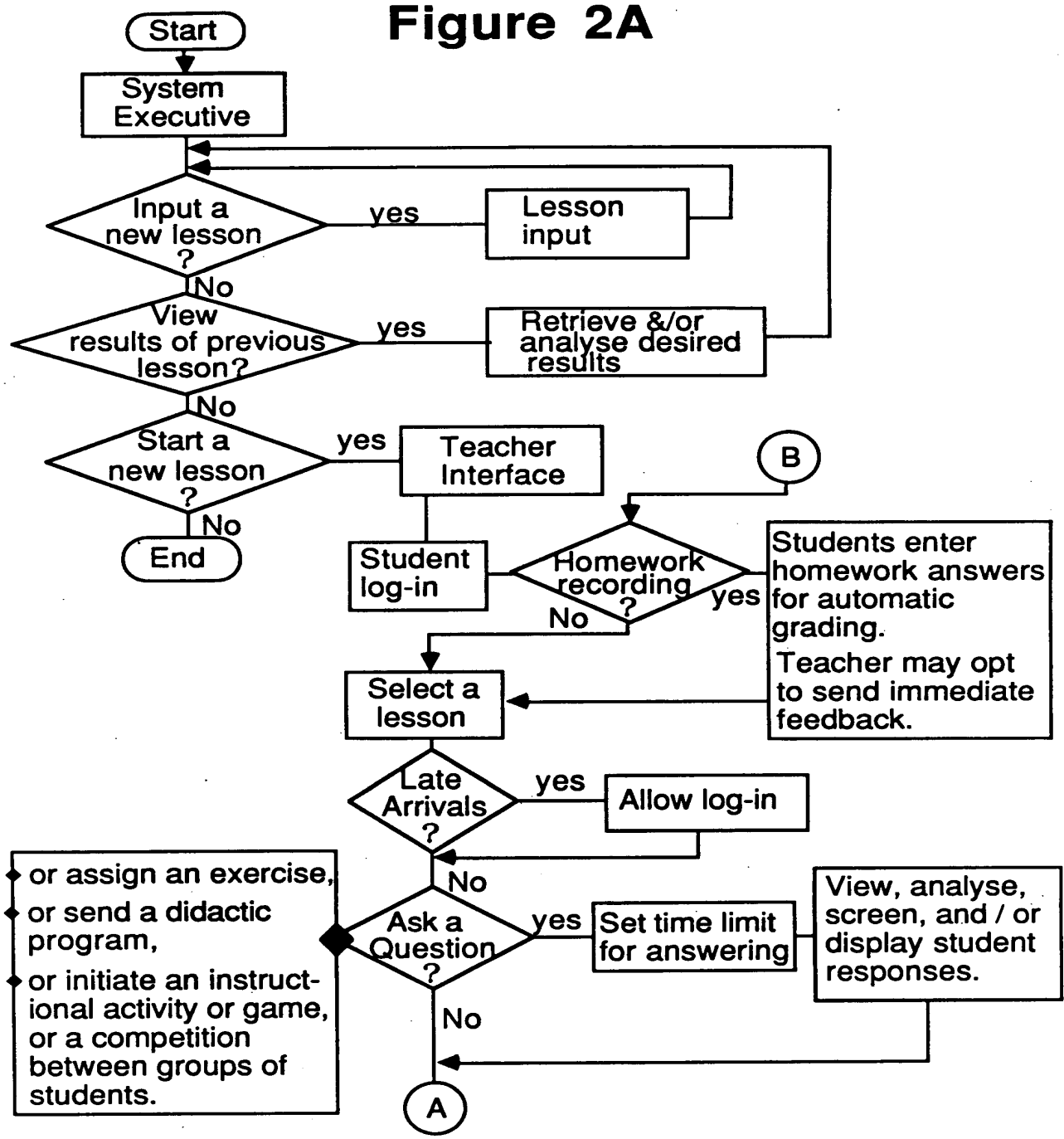


Figure 2A (cont'd)

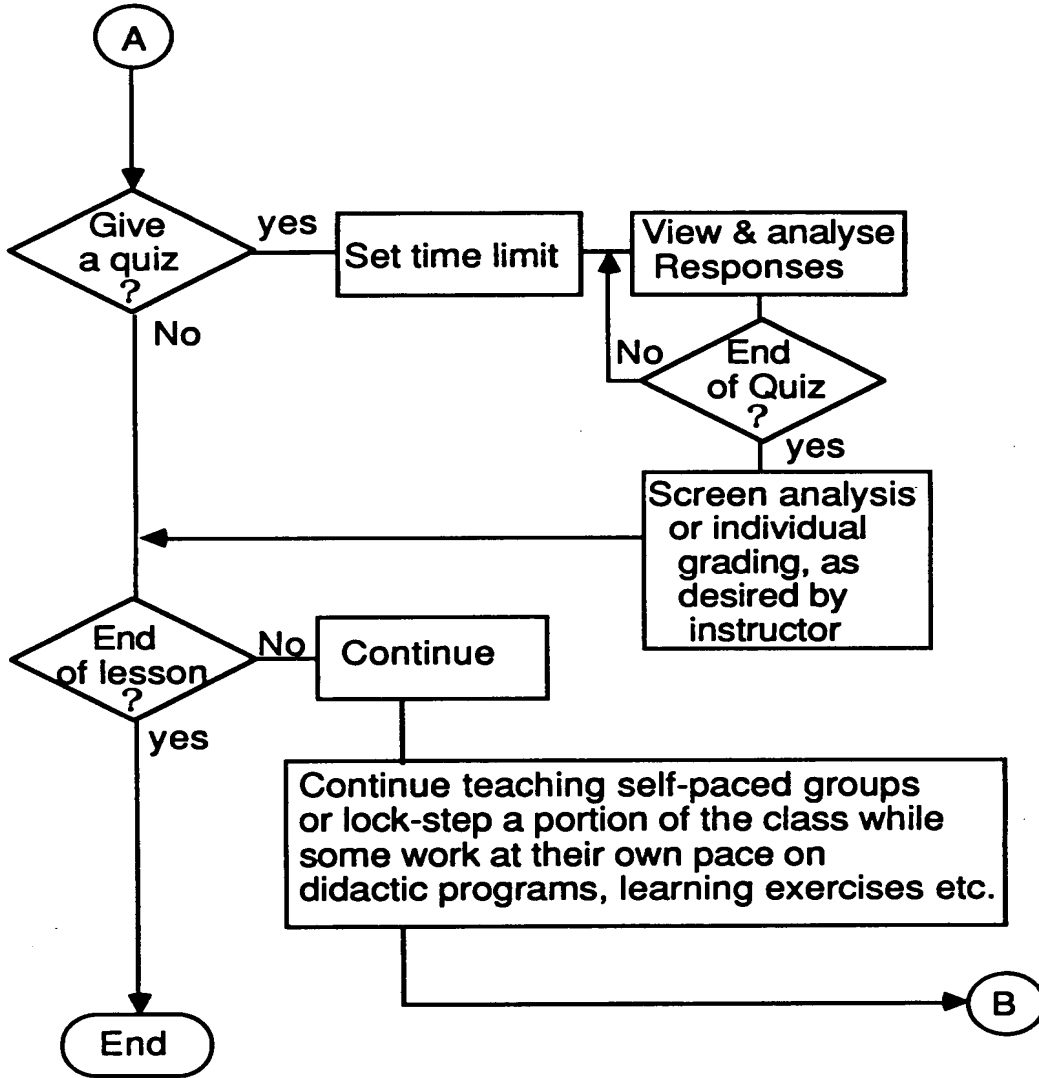


Figure 2B

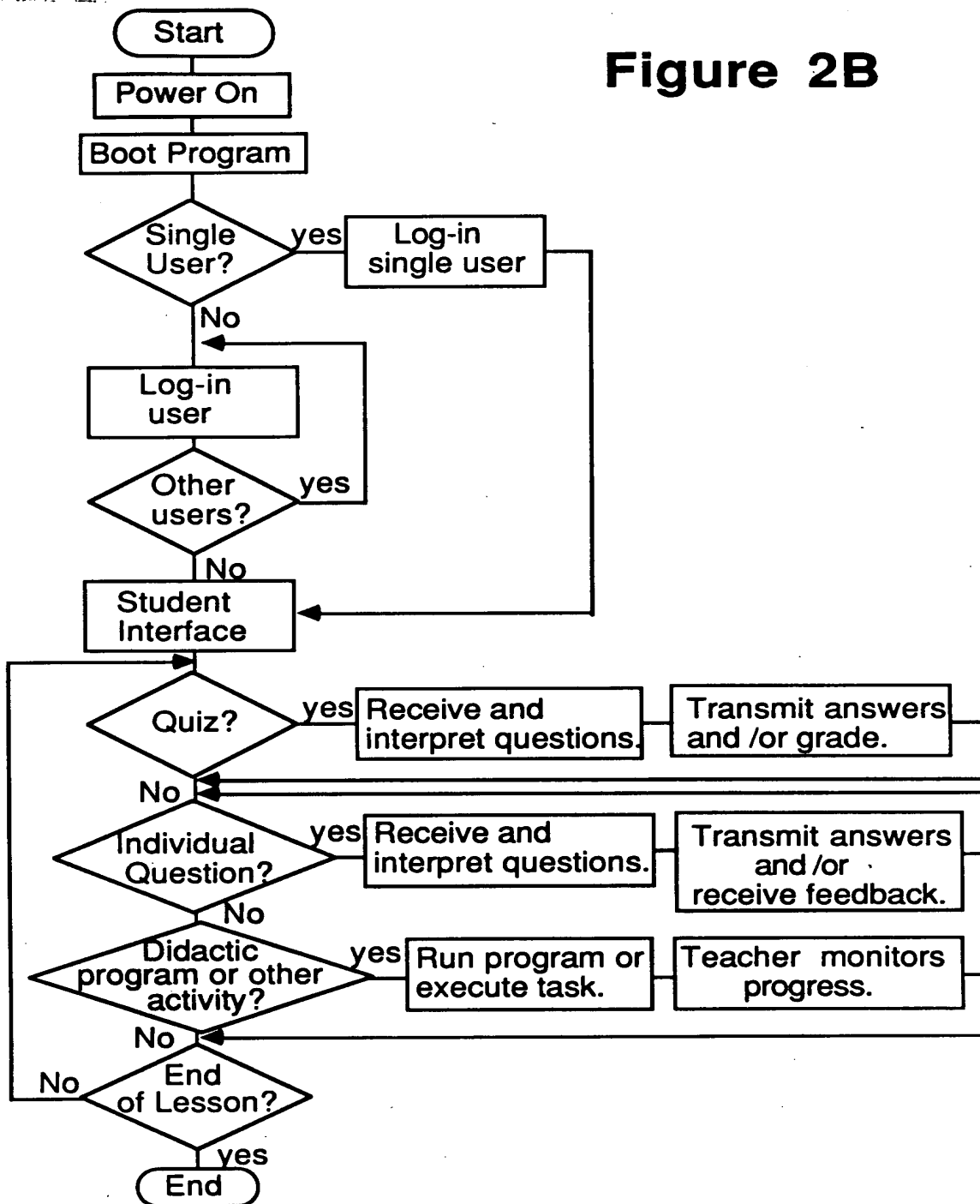
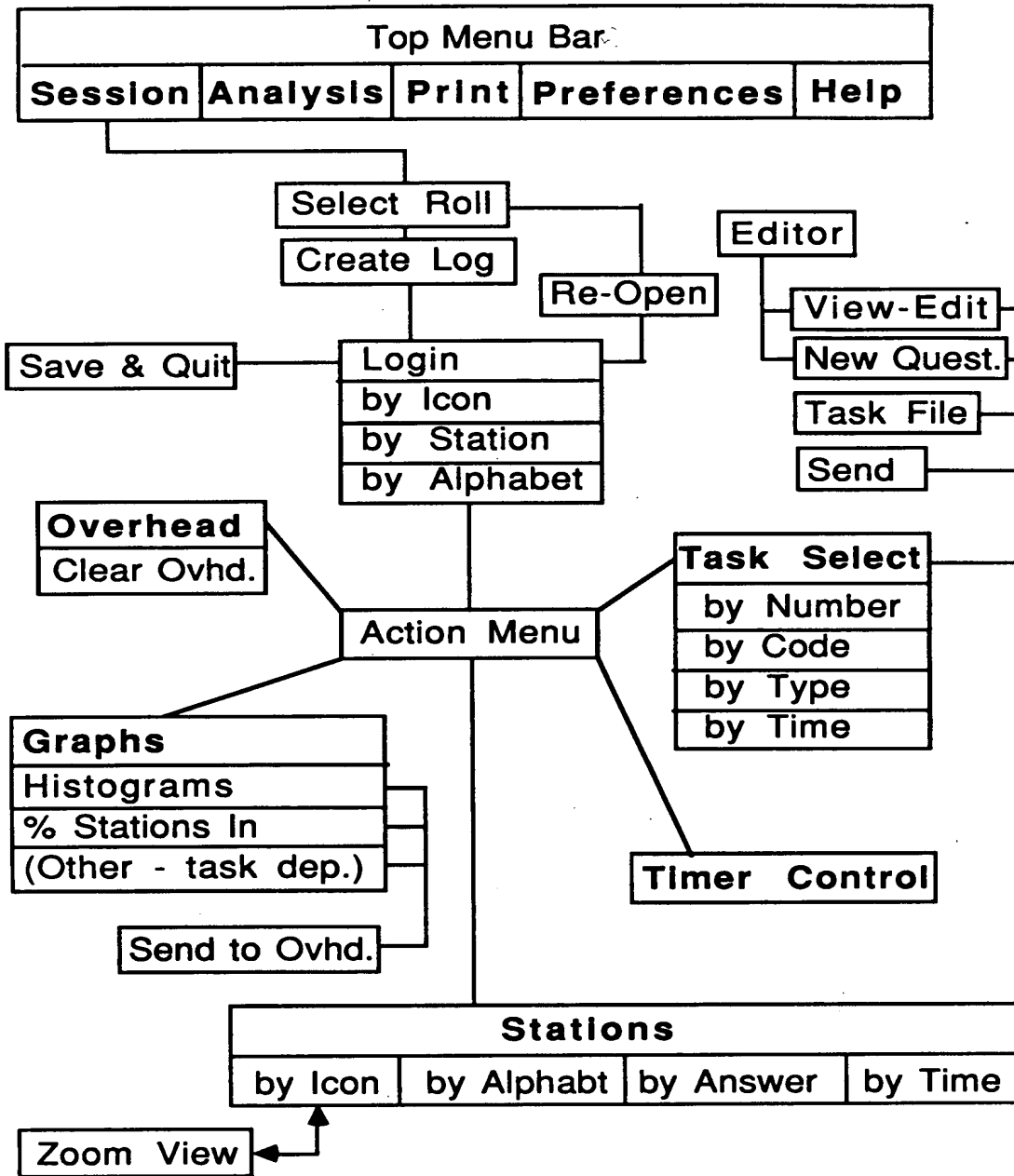


Figure 3A



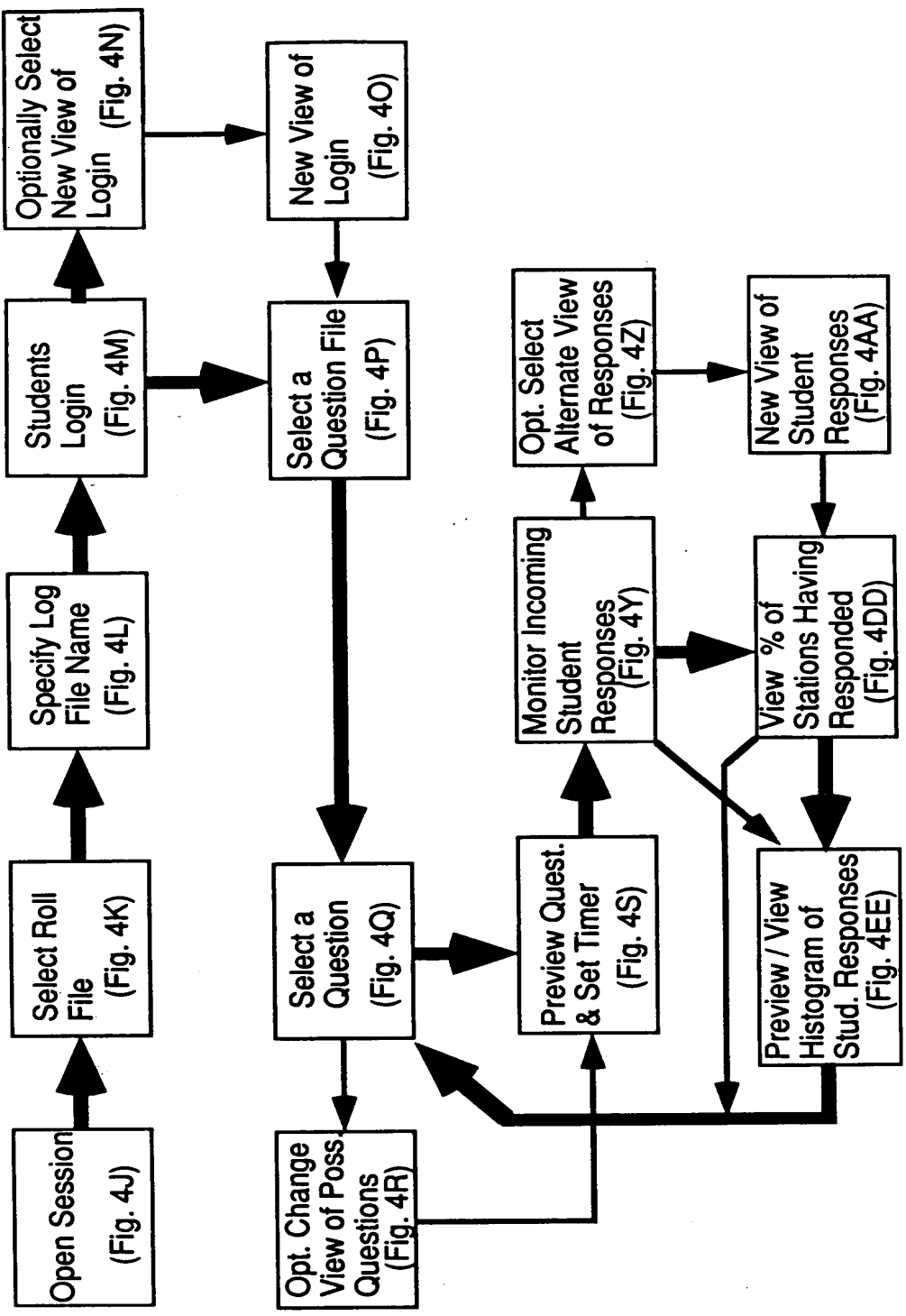


Fig. 3B

fig. 4A

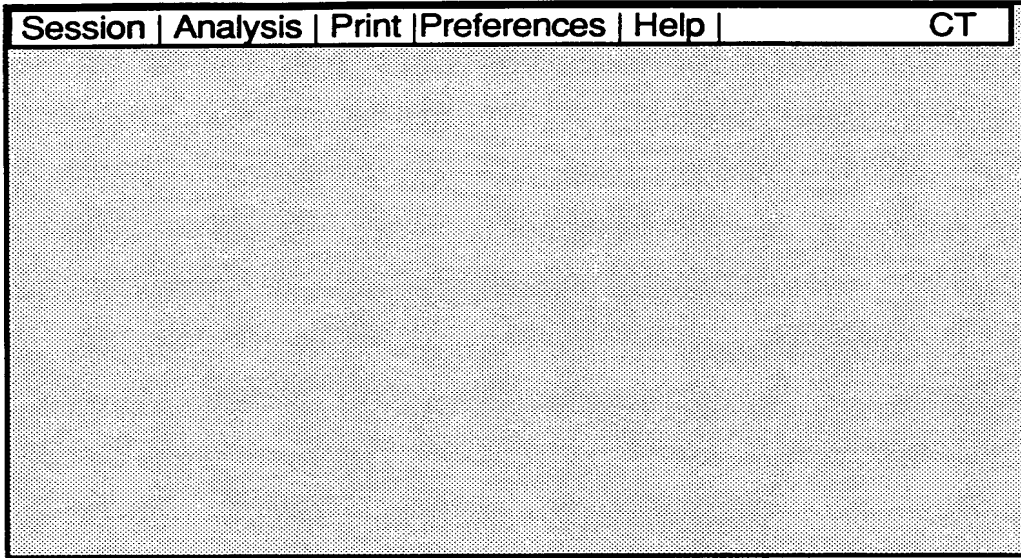


fig. 4B

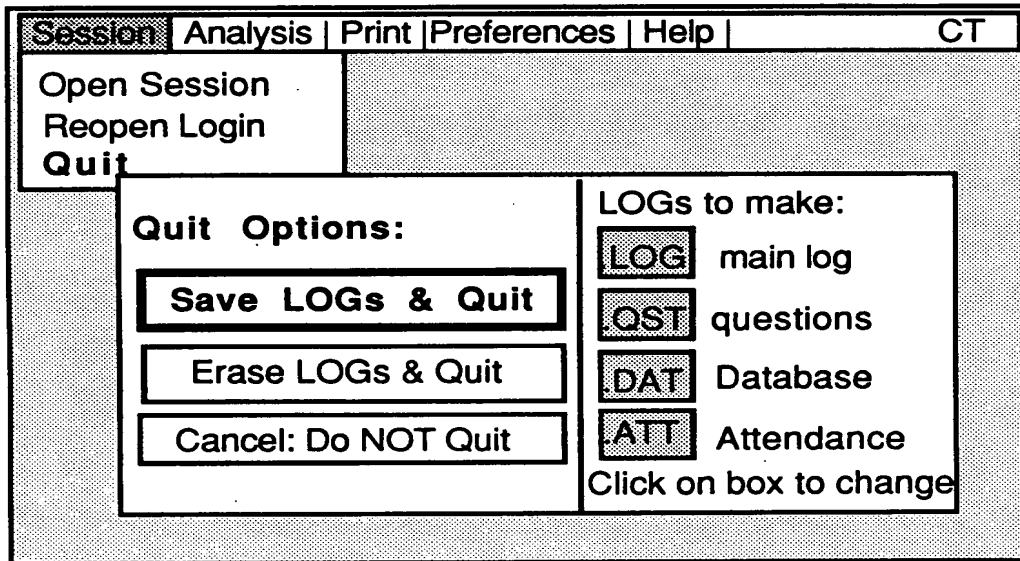


fig. 4C

Session	Analysis	Print	Preferences	Help	CT
Review Class performance					
Rank by:		Filter:			
<input checked="" type="checkbox"/> Score	Last		<input checked="" type="checkbox"/> ALL	Quests.	
<input type="checkbox"/> # Right	Type:		<input checked="" type="checkbox"/> ALL		
<input type="checkbox"/> Time	Code:		<input checked="" type="checkbox"/> ALL		
<input type="checkbox"/> Name	Num. of Q's: 06				
<input type="checkbox"/> Station					
<input type="checkbox"/> Inverse					

fig. 4D

Session	Analysis	Print	Preferences	Help	CT
Help Mode: <input type="checkbox"/> Extra Hlp <input checked="" type="checkbox"/> Norm <input type="checkbox"/> Off <input type="checkbox"/> Advise					
Click on the topic you need help with...					
<input type="checkbox"/> Cancel	<input type="checkbox"/> Prefernc	<input type="checkbox"/> Vw/Edit			
<input type="checkbox"/> Edit	<input type="checkbox"/> % In				
<input type="checkbox"/> Files	<input type="checkbox"/> Questn				
<input type="checkbox"/> Help	<input type="checkbox"/> Respon				
<input type="checkbox"/> Histog.	<input type="checkbox"/> Rolls				
<input type="checkbox"/> Login	<input type="checkbox"/> Timer				
<input type="checkbox"/> Overhd	<input type="checkbox"/> View				

fig. 4E

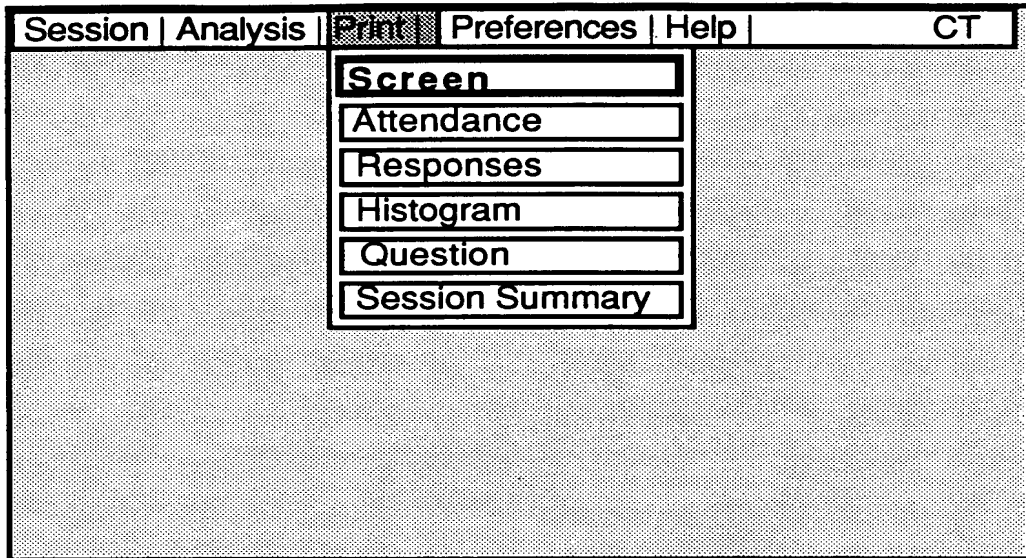


fig. 4F

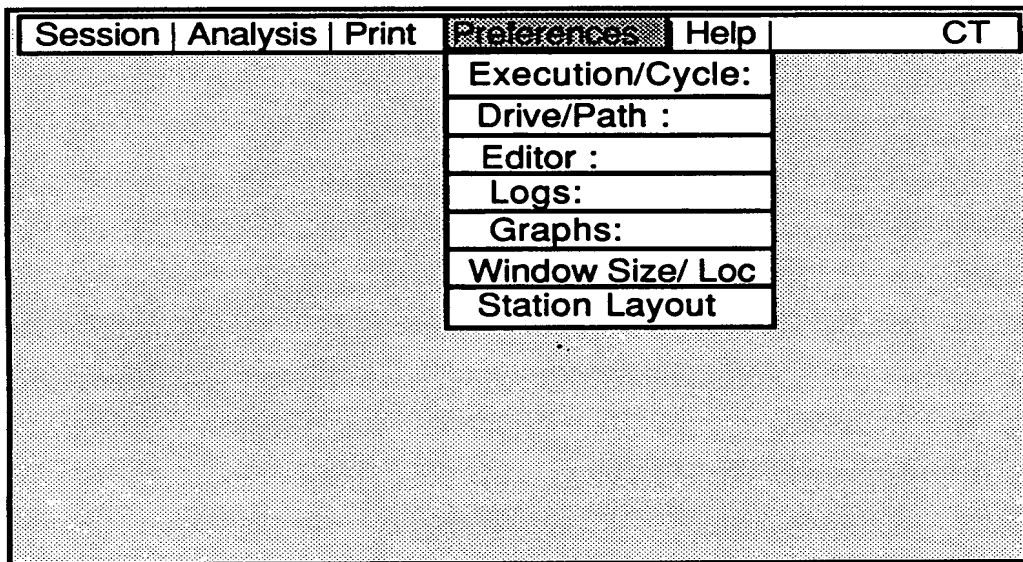


fig. 4G

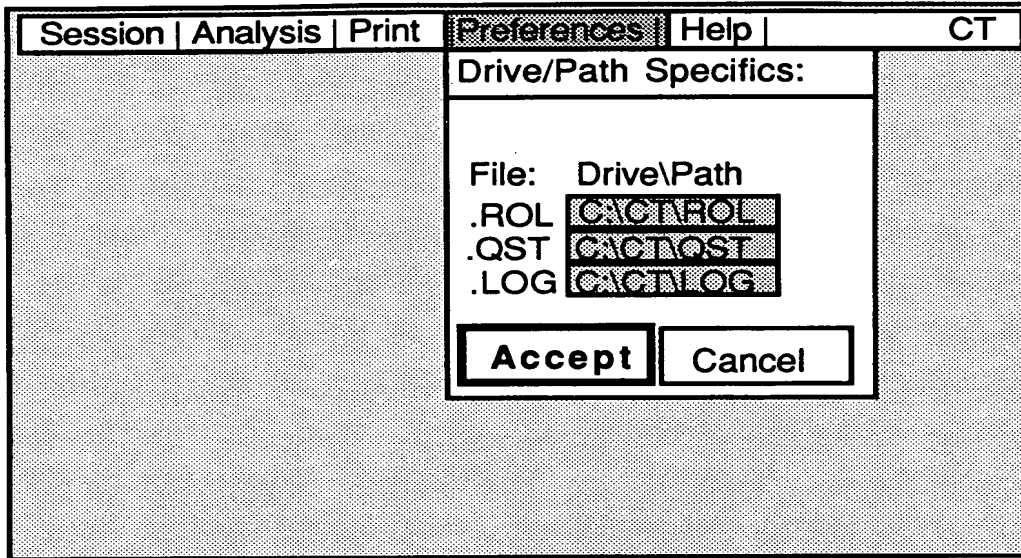


fig. 4H

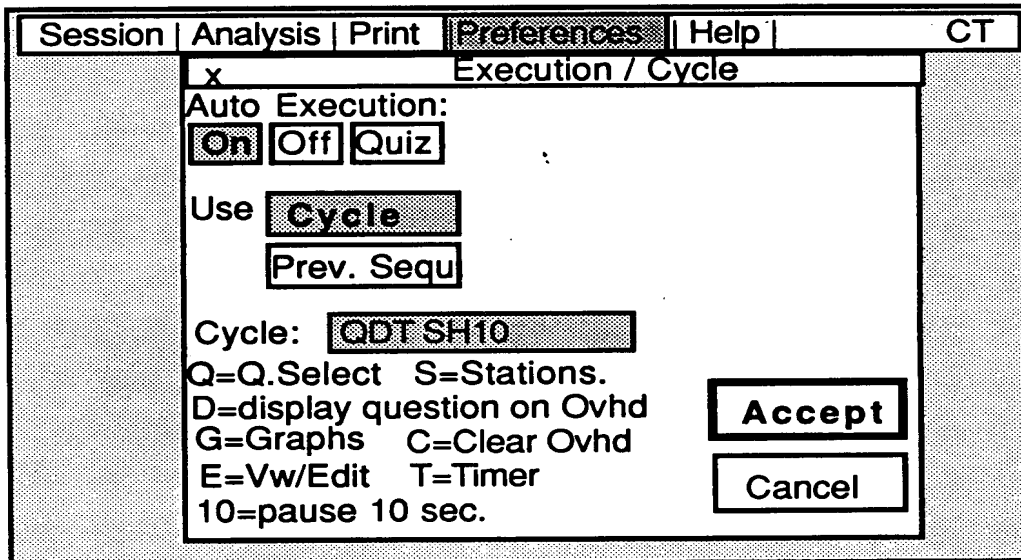


fig. 4I

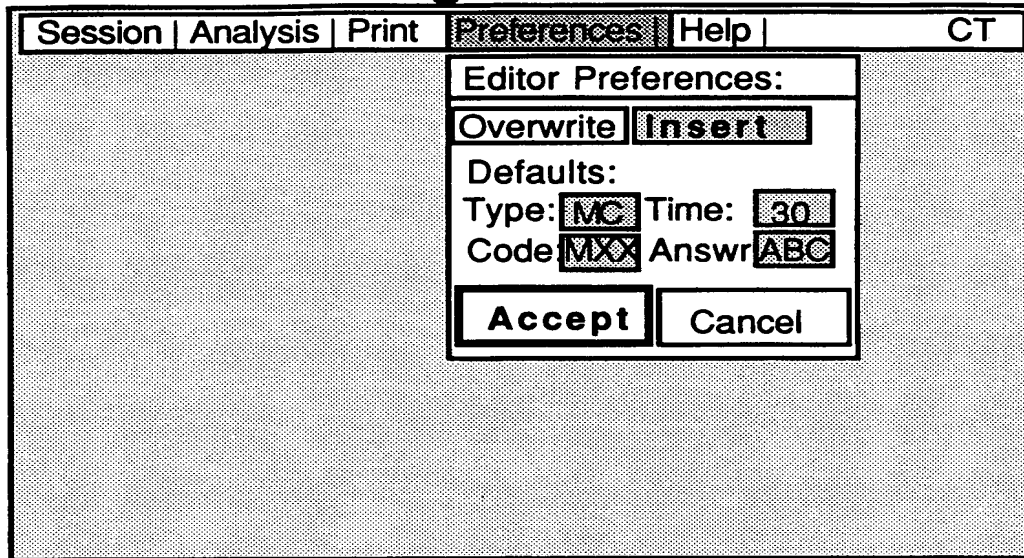


fig. 4J

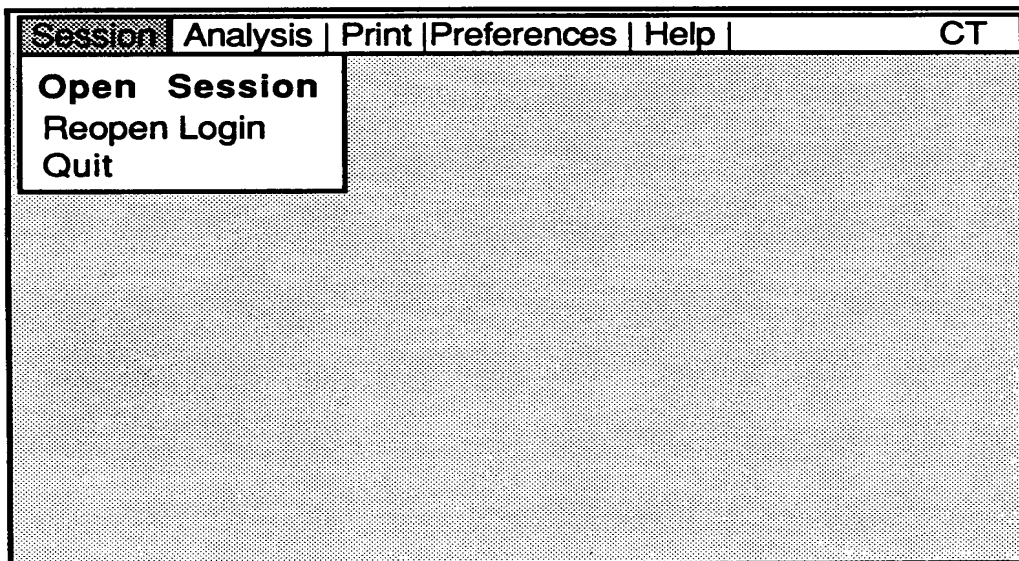


fig. 4K

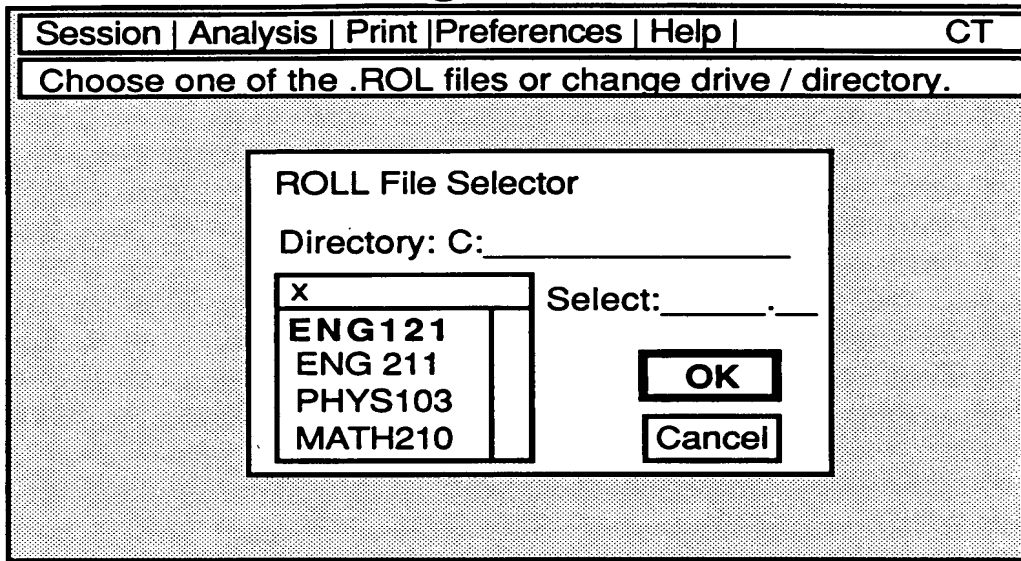
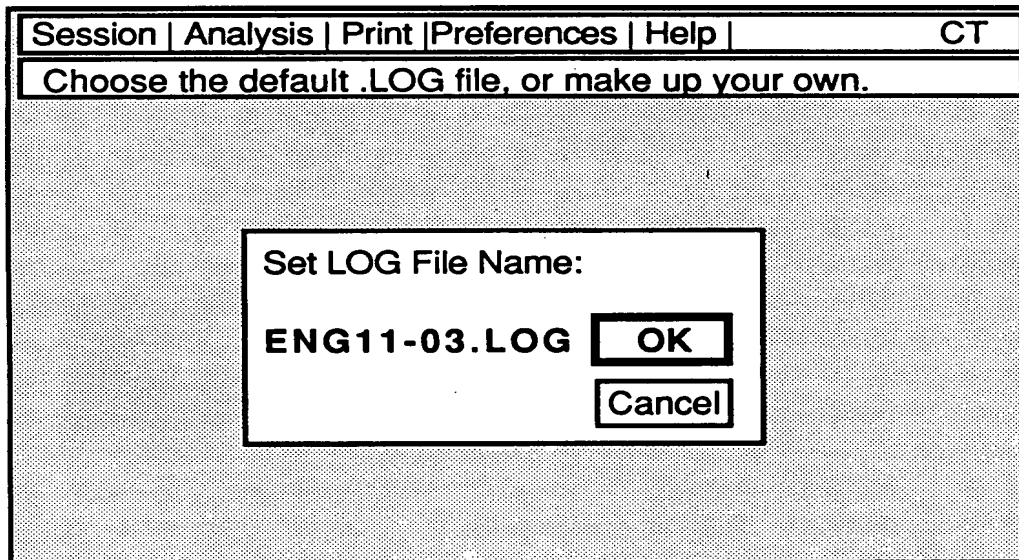


fig. 4L



344627

fig. 4M

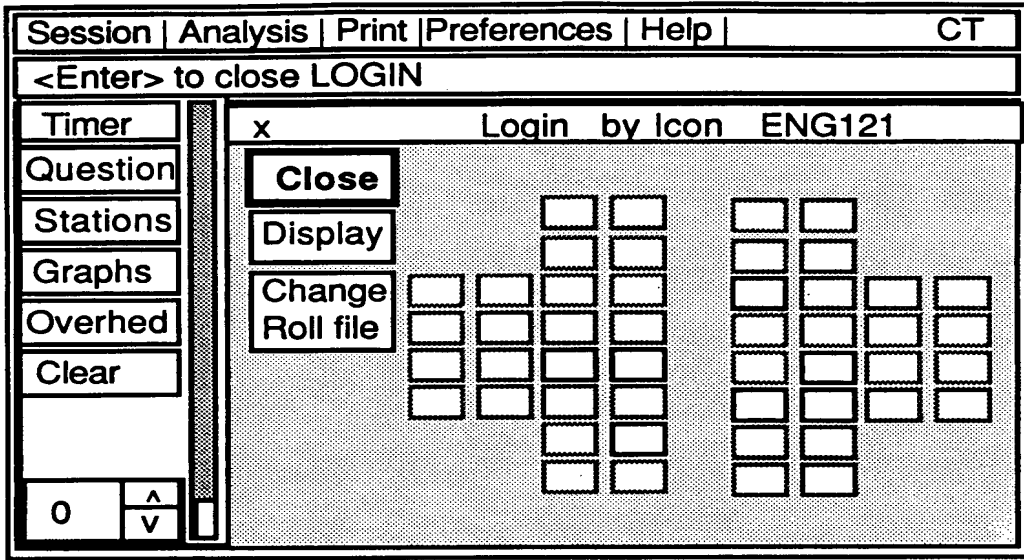
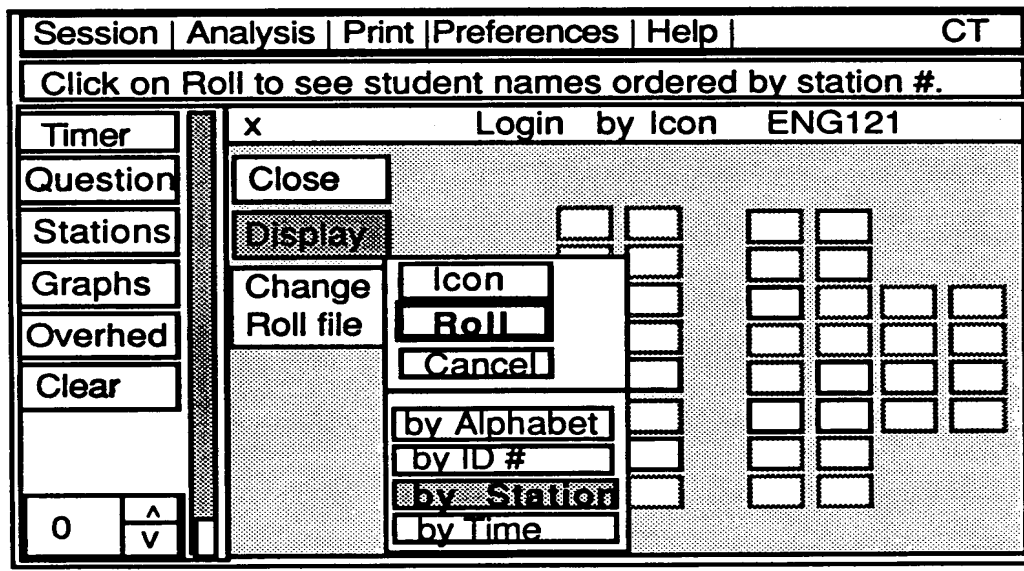


fig. 4N



344627

fig. 40

Session Analysis Print Preferences Help		CT
<Enter> to close LOGIN, Display to change view of LOGIN		
Timer	x	Login by Station ENG121
Question	Close	B2 L. Abrah.
Stations	Display	C5 S. Ball F. Mank
Graphs	Change	C6 T.Quill B.Long
Overhed	Roll file	D3 F.Grunt A. Short I.Q. Test
Clear		D4 R. Mast
		D6 R.Knapp
		F5 Alice Atkins
0	^ v	

fig. 40'

Session Analysis Print Preferences Help		CT
<Enter> to close LOGIN, Display to change view of LOGIN		
Timer	x	Login by Alphabt ENG121
Question	Close	B2 L. Abrah. 8236
Stations	Display	F5 Alice Atkins 9345
Graphs	Change	C5 S. Ball 7360
Overhed	Roll file	F. Brinker 4581
Clear		D3 F.Grunt 5216
		Fred Hart. 7832
		D6 R.Knapp 2316
		Tom King 3862
		C6 B.Long 5592
		C5 F. Mank 4083
		D4 R. Mast 8437
		C6 T.Quill 3392
0	^ v	

344627

fig. 4P

Session | Analysis | Print | Preferences | Help | CT

Select question file, or change drive / directory.

Question

QUESTION File Selector

Directory: C: _____

x
 REVW-9
 MECH1-3
 MECH2-5
 QUIZ-9

Select: _____

OK

Cancel

Timer

Questn

Stations

Graphs

Overhed

Clear

0 ^
v

fig. 4Q

Session | Analysis | Print | Preferences | Help | CT

Select view -- order of questions in list..

x REVW-9 Question by Number

Close	Tp	Code	First Line / Title	An	Ti
	MC	MC11	A lever arm 10 m	AD	35
	Nu	MA21	Calculate the for	4.2	80
	MC	GR09	A ball falling from	B	20

Timer

Question

Stations

Graphs

Overhed

Clear

0 ^
v

Q. File

Vw/Edit

New Q.

Send

fig. 4R

Session Analysis Print Preferences Help		CT
Select view -- order of questions in list..		
Timer	x REVW-9 Question by Number	
Question	Close	Tp Code First Line / Title An Ti
Stations	Display	MC MC11 A lever arm 10 m AD 35 Nu MA21 Calculate the for 4.2 80 ball falling from B 20
Graphs	Q. File	Text Cancel
Overhead	Vw/Edi	by Type
Clear	New Q.	by Number by Code
0	Send	by Answer

fig. 4S

Session Analysis Print Preferences Help		CT
<Enter> to start clock, arrows add or subtract time. 1:20		
Timer	x REVW-9 Overhead Nu 4.2	
Question	Time Left	force needed to hold a 1.65 kg stationary on a ramp inclined at an degrees.
Stations	01:20	
Graphs	Zero	
Overhead	Start	
Clear	Cancel	_____ Newtons
0		01:20

344627

fig. 4T

Session Analysis Print Preferences Help		CT
Press <Enter> to send this question to overhead.		0:30
Timer	x View / Edit	
Question	Which of the following is the closest to the correct value for the acceleration of gravity	Question # 1
Stations		Defaults:
Graphs		Type: <input type="text" value="MC"/> Time: <input type="text" value="0:30"/>
Overhead		Code: <input type="text" value="MXX"/> Choice: <input type="text" value="ABC"/>
Clear	A: 8.9 m/sec ² B: 980 ft/sec ² C: 9.8 m_	Answer: <input type="text"/>
0	<input type="text" value="^"/> <input type="text" value="v"/>	<input type="button" value="Cancel"/> <input type="button" value="Send"/>

fig. 4U

Session Analysis Print Preferences Help		CT
Press <Enter> to start clock.		1:20
Timer	x REVW-9 Overhead Nu 4.2	
Question	Calculate the force needed to hold a 1.65 kg block of ice stationary on a ramp inclined at an angle of 45 degrees.	
Stations		
Graphs		
Overhead		
Clear	_____ Newtons	
0	<input type="text" value="^"/> <input type="text" value="v"/>	<input type="text" value="1:20"/>

344627

fig. 4V

Session Analysis Print Preferences Help		CT
Press <Enter> to start clock.		0:30
Timer	x REVW-9 Overhead Gr 3.2	
Question	Specify the grid coordinates for the best location for house on the specified lot. H.V	
Stations		
Graphs		
Overhead		
Clear		
0	^ v	0:30

fig. 4W

Session Analysis Print Preferences Help		CT
Press <Enter> to start clock.		5:00
Timer	x REVW-9 Overhead Tx	
Question	List several of the famous Greek thinkers linking each to his or her most important contribution to philosophy or science.	
Stations		
Graphs		
Overhead		
Clear		
0	^ v	5:00

344627

fig. 4Z

Session | Analysis | Print | Preferences | Help | CT

Press <Enter> to see answers ordered by station #. 0:20

x REVW-9 Stations by Icon #1 Nu 3E-4

Timer	Close								
Question	Disply								
Stations	Cncl Q	Icon							
Graphs		Text							
Overhed		Cancel							
Clear									
		by Alphabet							
		by Station							
		by Answr							
		by Time							
1	^ v								

fig. 4AA

Session | Analysis | Print | Preferences | Help | CT

Press <Enter> to view graphs of responses in. 0:15

x REVW-9 Stations by Text #1 Nu 3E-4

Timer	Close	Sta#B2	L.Abrah., Fred Hart.
Question	Display	√1	Nu 3E-4 1:42
Stations	Cancel Q	Sta#C5	S.Ball, F.Mank
Graphs		√1	Nu 3E-4 0:47
Overhed		Sta#C6	T.Quill, B.Long
		x1	Nu 4E-4 0:33
		Sta#D3	F.Grunt, A.Short,
			I.Q Test
		√1	Nu 3E-4 23sec
1	^ v		

344627

fig. 4BB

Session | Analysis | Print | Preferences | Help | CT

Press <Enter> to view histogram of responses in. 0:11

x REVW-9 Stations by icon #1 Nu 3E-4

Timer

Question

Stations

Graphs

Overhed

Clear

1 ^
v

Close

Display

Cancel Q

zoom [icons]

Sta#F5: Alice Atkins
Tom King, F. Brinker
√1 Nu 3E-4
Ti: 1:15 S: 1/1

fig. 4CC

Session | Analysis | Print | Preferences | Help | CT

Press <Enter> to view graphs of responses in. 0:03

x REVW-9 Stations by icon #1 Nu 3E-4

Timer

Question

Stations

Graphs

Overhed

1 ^
v

Close

Display

Cancel Q

fig. 4DD

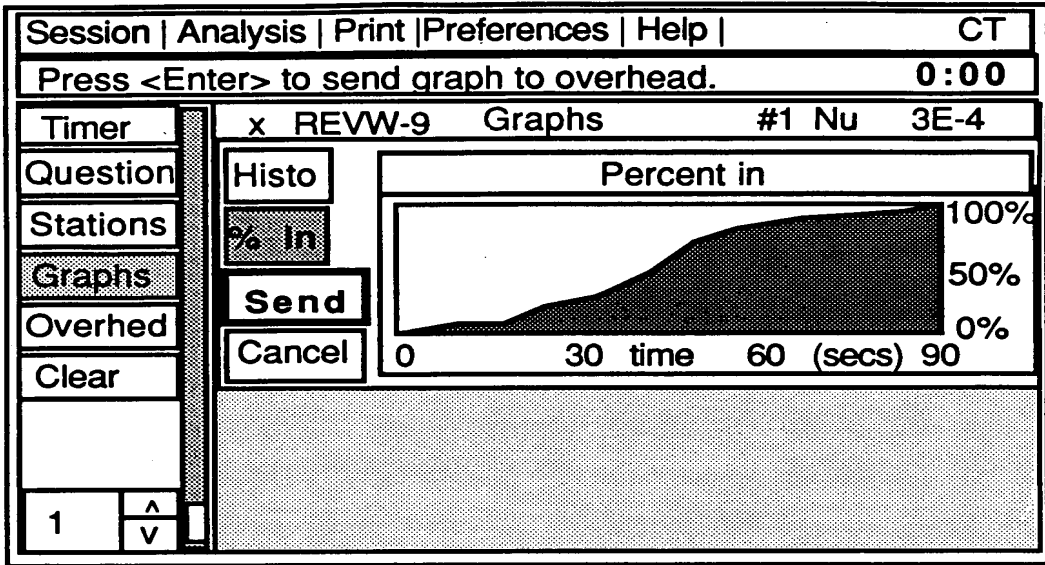
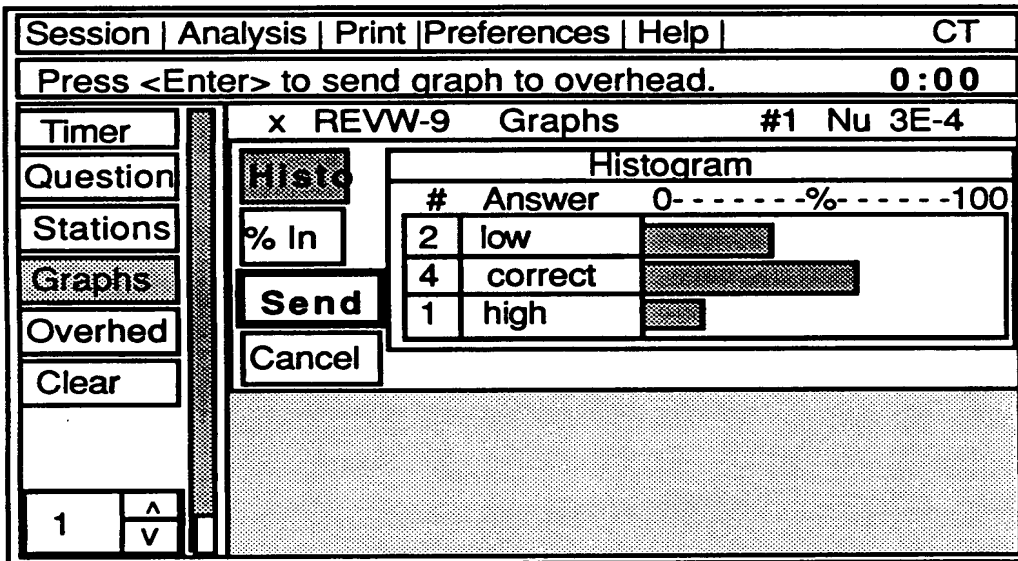


fig. 4EE



344627

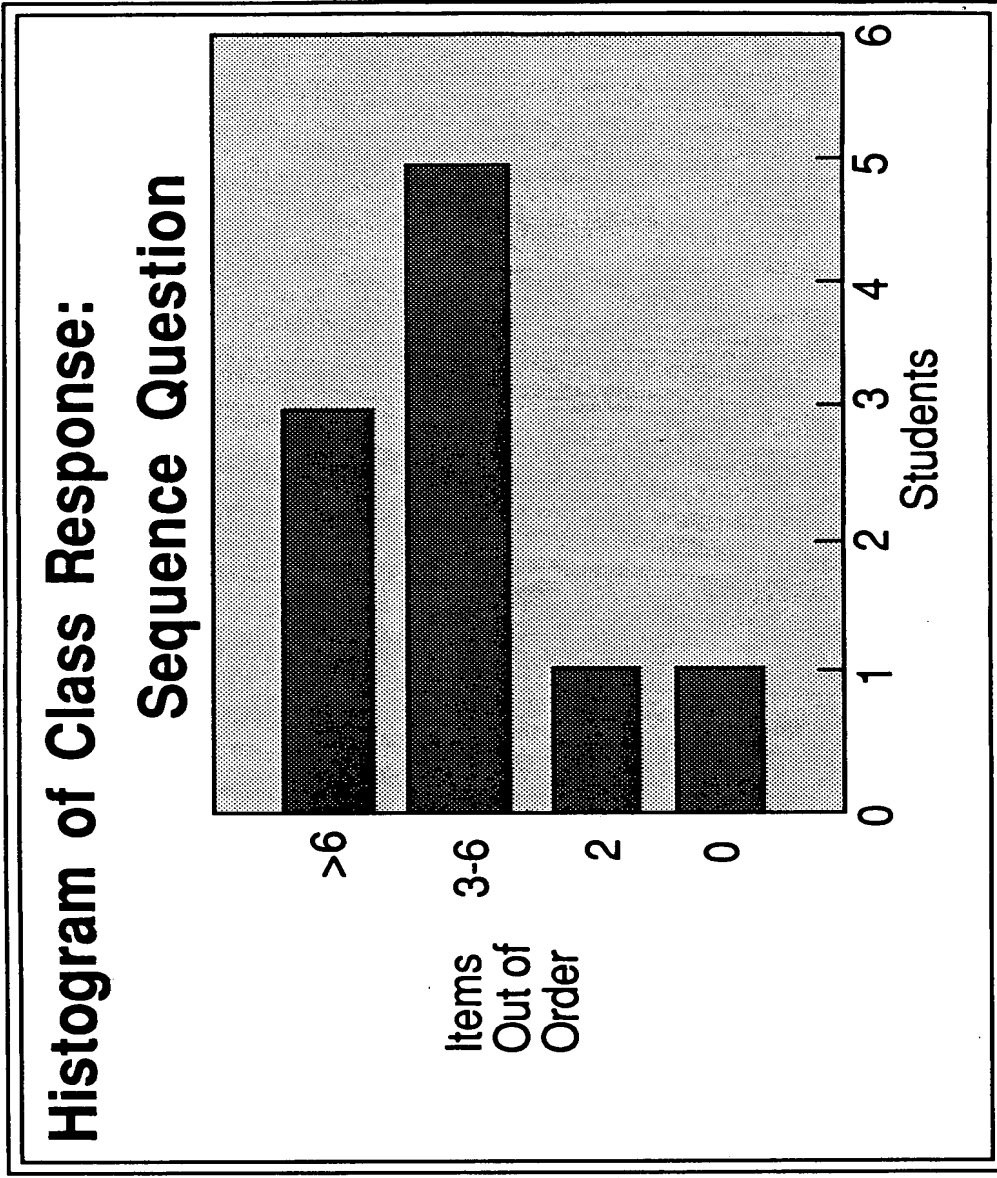


fig. 5A

34462)

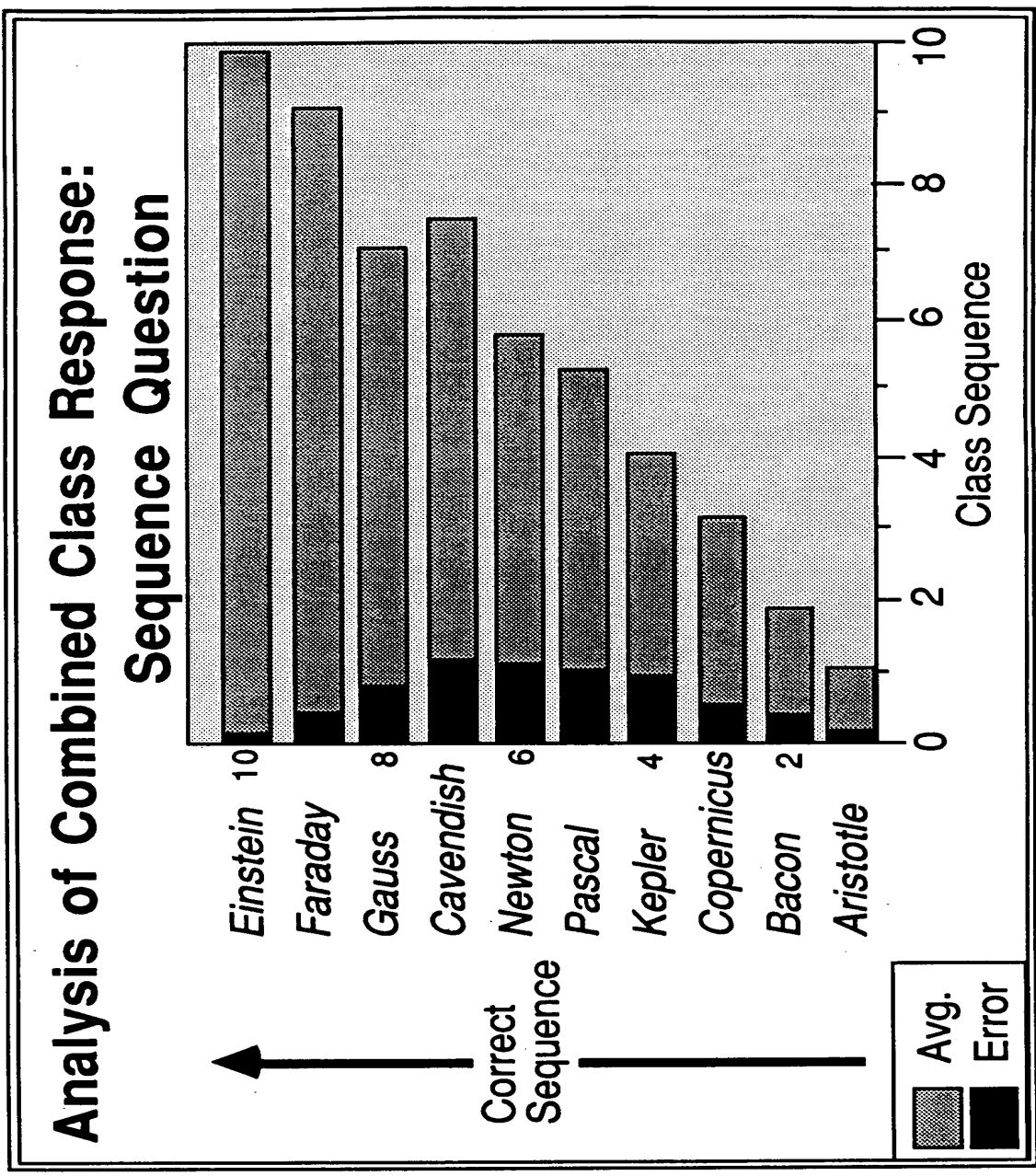


fig. 5B